

## FITZROY BALL BEARING DOOR TRACKS

**ALLOY MEDIUM A500b** Weight Capacity 102 kg

SCALE: FULL SIZE

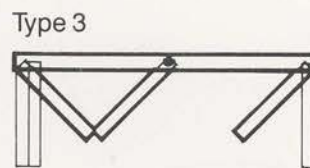
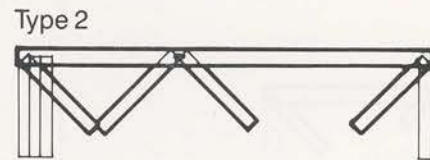
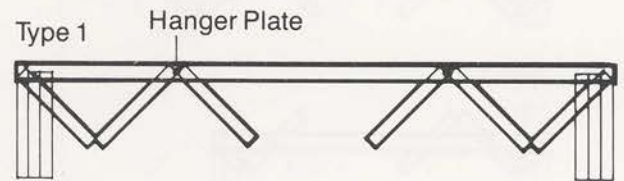
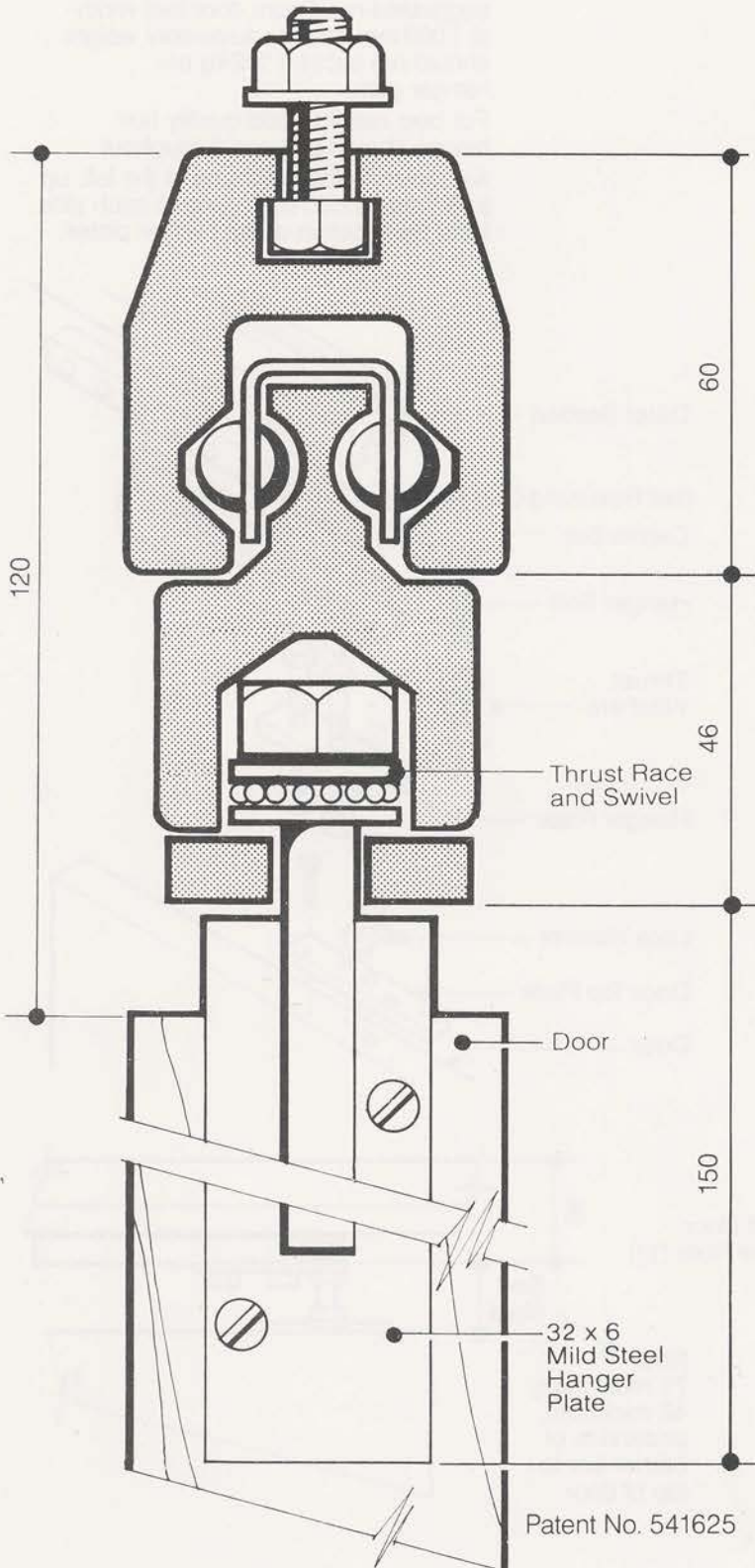
Set out on this sheet is a Bi-fold Door System using the Alloy Medium Fitzroy Door Track.

Suggested maximum door leaf width is 1,000 mm and the assembly weight should not exceed 102 kg per hanger plate.

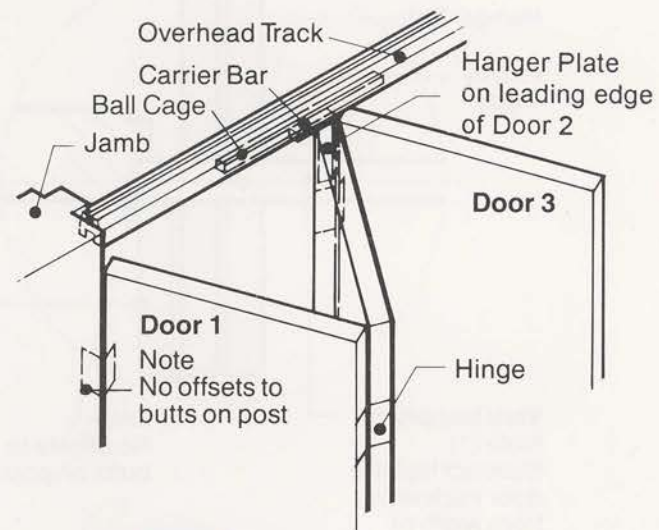
For best results the door to door and door jamb hinges should be high quality heavy gauge cast brass stainless steel or mild steel with ball.

The construction of the Fitzroy Track allows three door arrangements as shown in the plan variations.

Flush floor fixing latches should be fitted on the captive door.



**Very Important Note**  
 Subtract half the door thickness from width of end doors (Door 1)



Australian Design Award