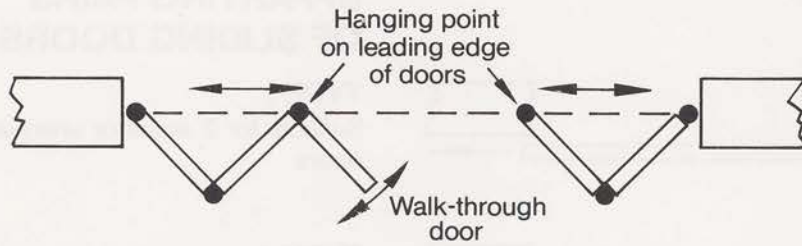
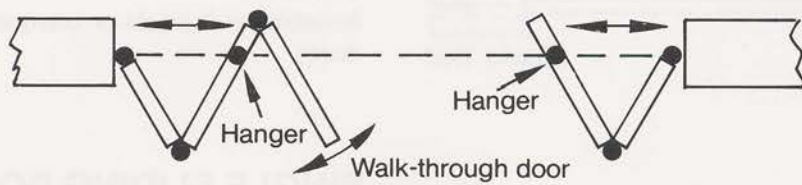


**FITZROY STEEL BALL BEARING DOOR TRACKS**  
**TYPICAL APPLICATIONS**

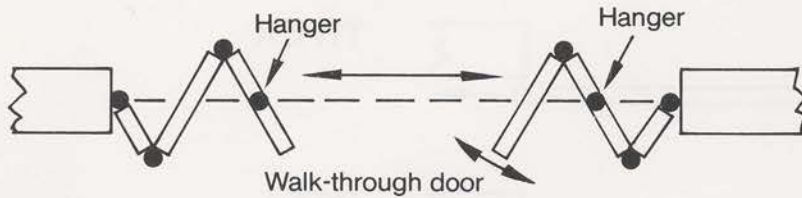
**BI-FOLD**



TYPE A



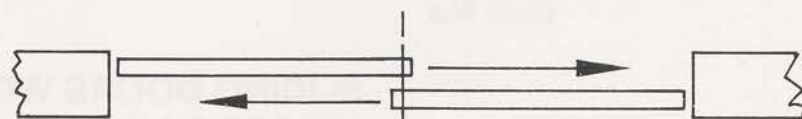
TYPE B (Doors hinged to jamb 150mm less in width)  
 Suitable for 2 to 6 doors



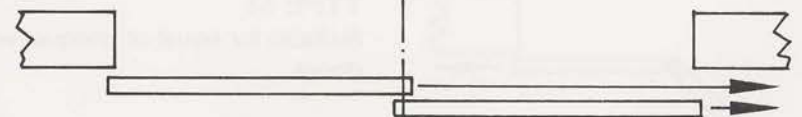
**ACCORDION** (Floor guides not necessary)

TYPE C Suitable for up to 3½ doors each side

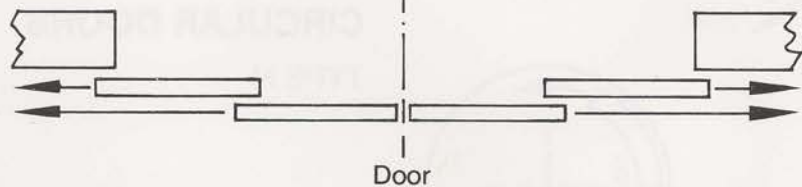
**PARALLEL SLIDING DOORS**



TYPE D  
 Suitable for 2 doors



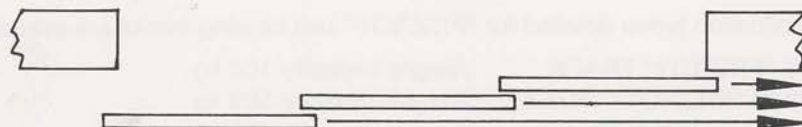
TYPE E  
 Suitable for 2 doors



TYPE F  
 Suitable for 4 doors

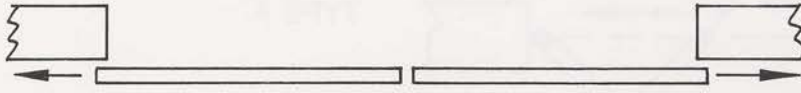


TYPE G  
 Suitable for 3 doors.



TYPE H  
 Suitable for 3 doors or 6 doors bi-parting from centre

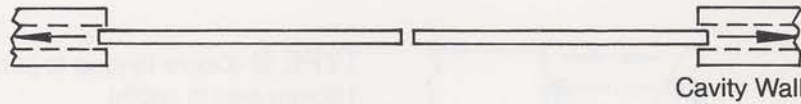
## TYPICAL APPLICATIONS



### BI-PARTING PAIRS OF SLIDING DOORS

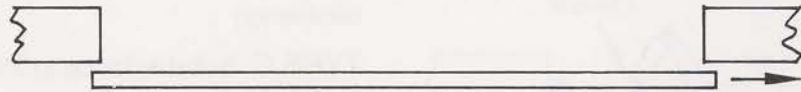
#### TYPE I

Suitable for 2 equal or unequal width doors



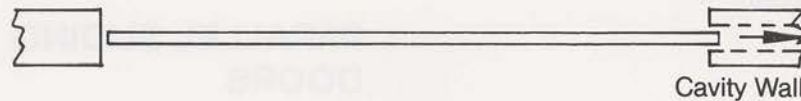
#### TYPE J

Suitable for 2 equal or unequal width doors



### SINGLE SLIDING DOORS

#### TYPE K



#### TYPE L



### SLIDING DOORS WITH HINGED DOORS

#### TYPE M

Suitable for equal or unequal width doors



### CIRCULAR DOORS

#### TYPE N

All application types detailed for "FITZROY" ball bearing tracks are available in

LIGHT "FITZROY" TRACK	Weight capacity 100 kg
MEDIUM "FITZROY" TRACK	Weight capacity 500 kg
HEAVY "FITZROY" TRACK	Weight capacity 1000 kg