

Marshall

CHARLES MARSHALL PTY. LTD ACN 004 107 411
451 Burnley St., Richmond, Victoria. 3121. Australia
Phone: (03) 9429 9044. Fax: 61-3-9428 0238.



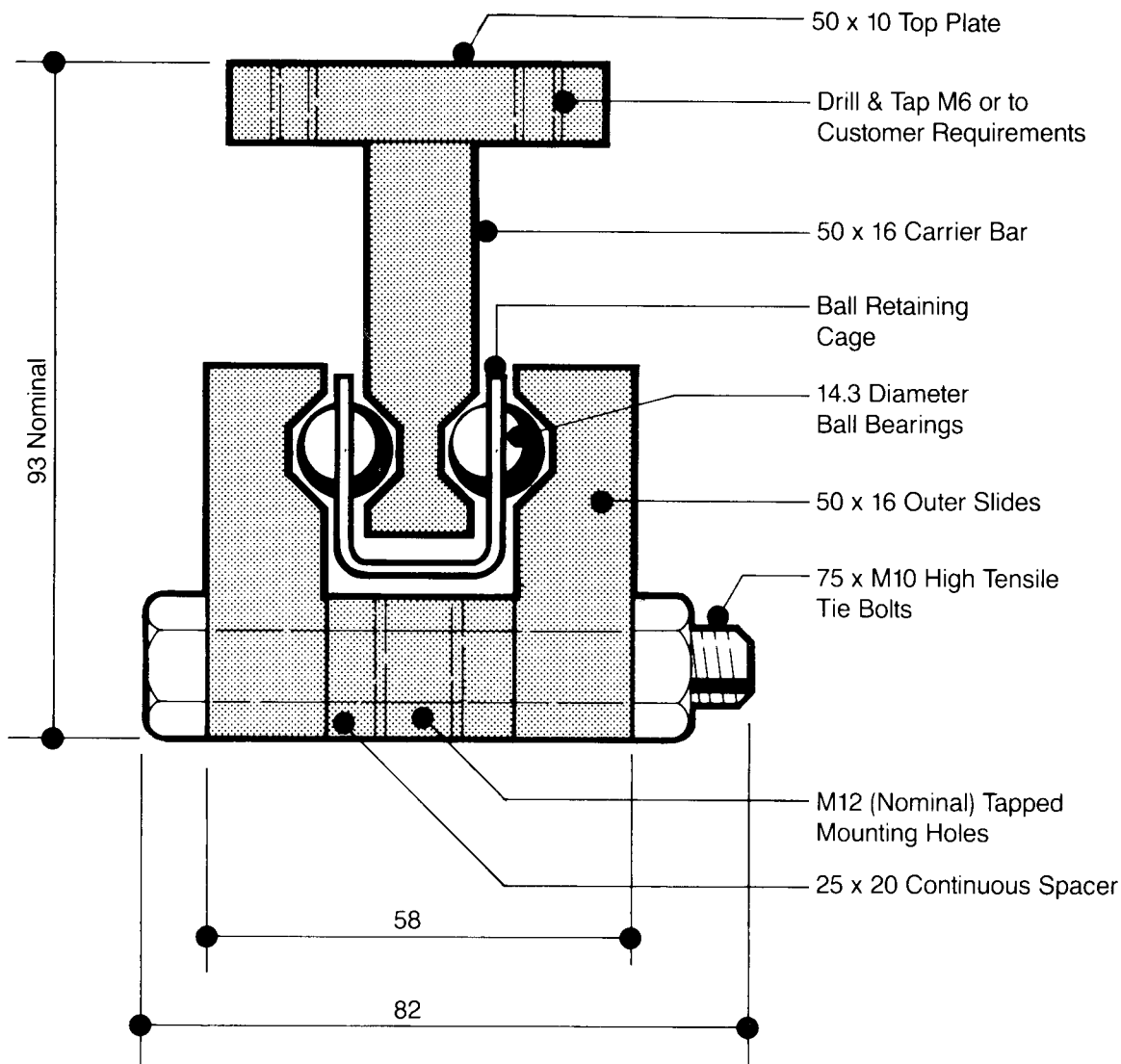
FITZROY BALL BEARING WITHDRAWAL UNITS

STEEL HEAVY S1000W Weight Capacity 1000 Kgs/pair

TYPICAL SECTION STANDARD UNIT

SCALE: FULL SIZE

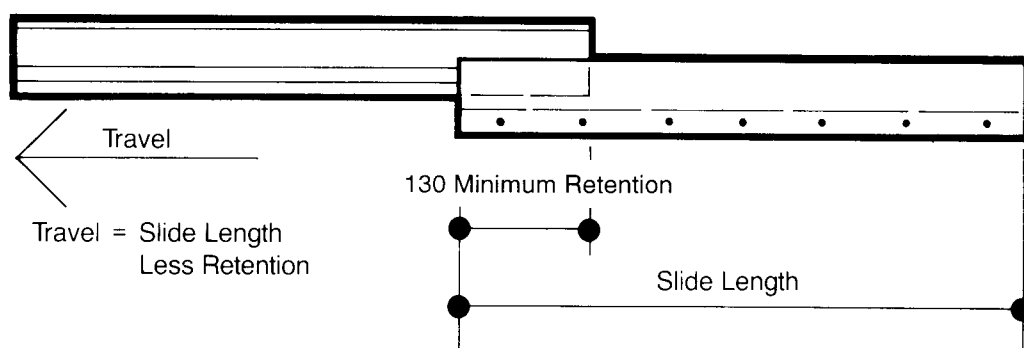
IMPORTANT
WEIGHT CAPACITY IS NOMINAL.
RECOMMENDED WORKING LOAD IS
CONTROLLED BY SLIDE LENGTH AND
TRAVEL AND LOAD DISTRIBUTION



ELEVATION STANDARD WITHDRAWAL UNIT

NOT TO SCALE

Note: Slide Tracks must be Parallel and Level.
Any Misalignment will Jam Slide.



**Australian
Design Award
1990**



Charles Marshall Pty Ltd
Fitzroy® Withdrawal
Units
S100W - S100WD
S500W - S500WD
S1000W - S1000WD
Authorised for 1999
Licence No. 90348
STANDARDS AUSTRALIA