

FITZROY BALL BEARING WITHDRAWAL UNITS

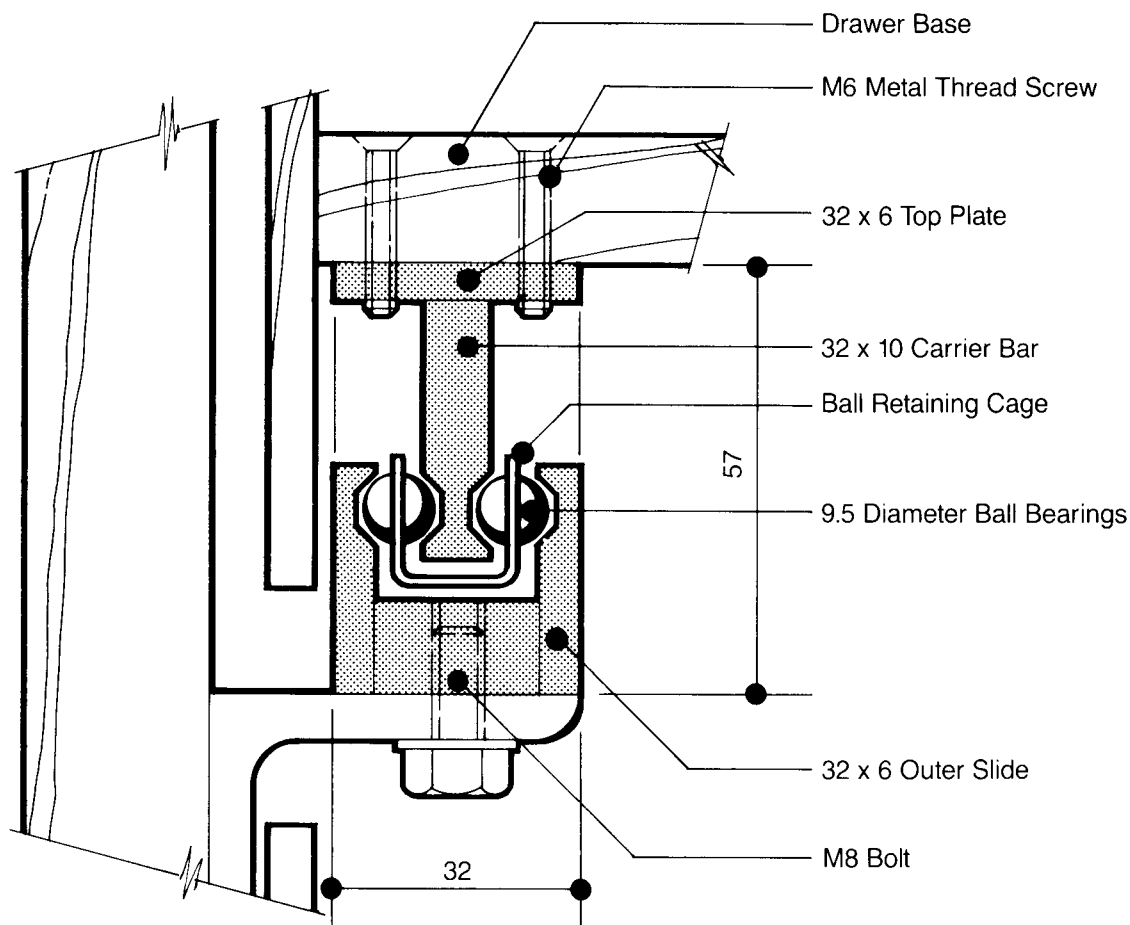
STEEL LIGHT S100W

Weight Capacity 150 Kgs/pair

TYPICAL SECTION STANDARD UNIT

SCALE: FULL SIZE

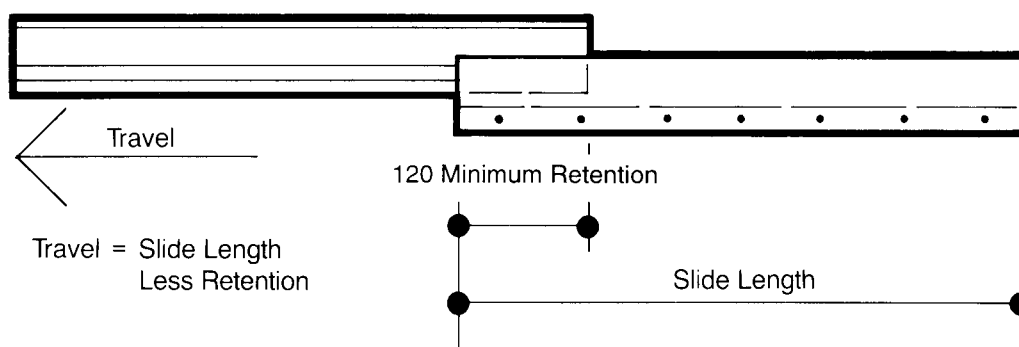
IMPORTANT
WEIGHT CAPACITY IS NOMINAL.
RECOMMENDED WORKING LOAD IS
CONTROLLED BY SLIDE LENGTH AND
TRAVEL, AND LOAD DISTRIBUTION



ELEVATION STANDARD WITHDRAWAL UNIT

NOT TO SCALE

Note: Slide tracks must be parallel and level. Any Misalignment will Jam Slide.



**Australian
Design Award
1990**



Charles Marshall Pty Ltd
Fitzroy® Withdrawal
Units
S100W - S100WD
S500W - S500WD
S1000W - S1000WD
Authorised for 1999
Licence No. 90348
STANDARDS AUSTRALIA