

## FITZROY BALL BEARING BOAT RACK TRACK

### STEEL MEDIUM S500 BRT

Weight Capacity 360 Kgs/pair

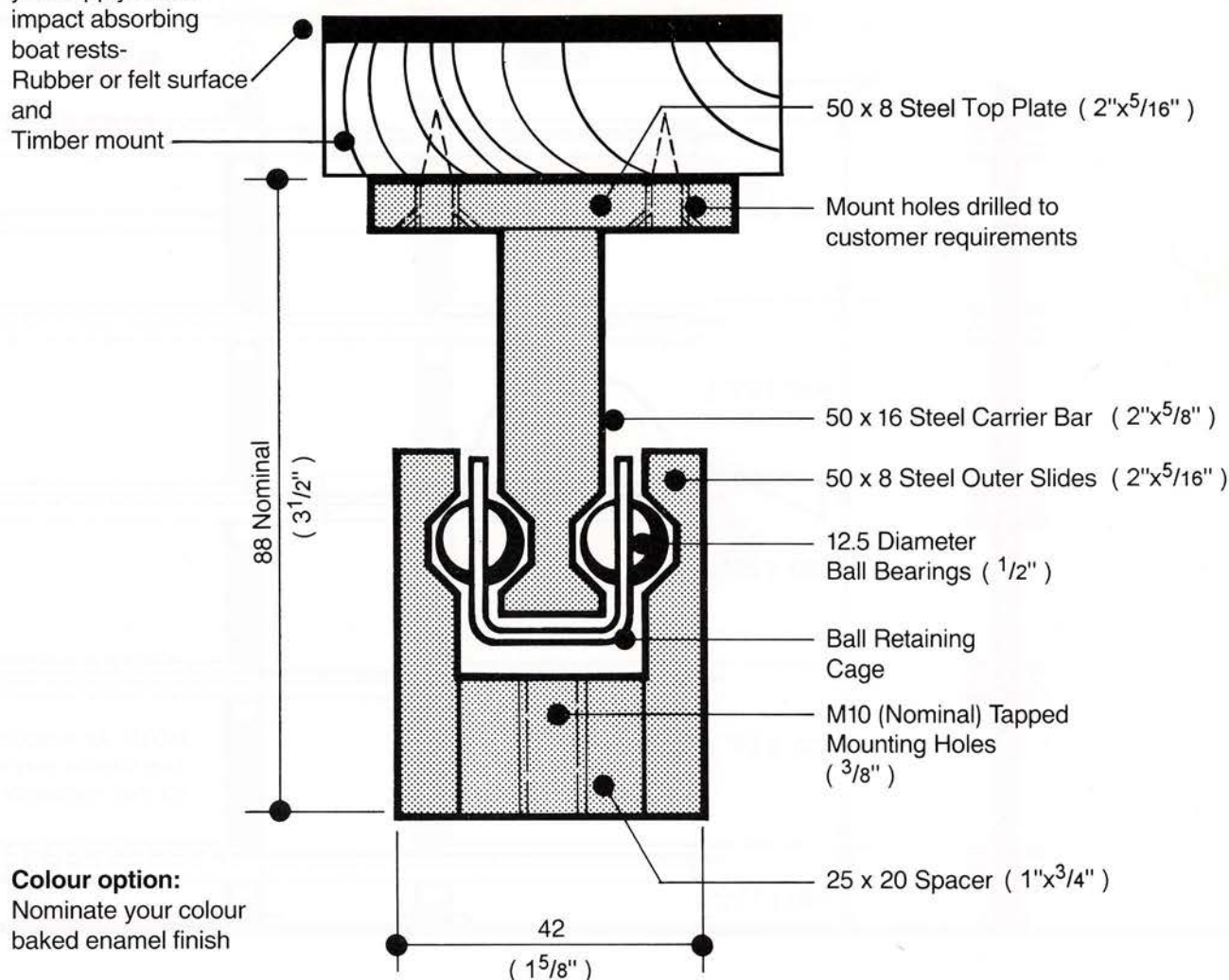
790 lbs /pair

### TYPICAL SECTION STANDARD UNIT

**It is recommended**

you supply and fit  
impact absorbing  
boat rests-  
Rubber or felt surface  
and  
Timber mount

SCALE: FULL SIZE

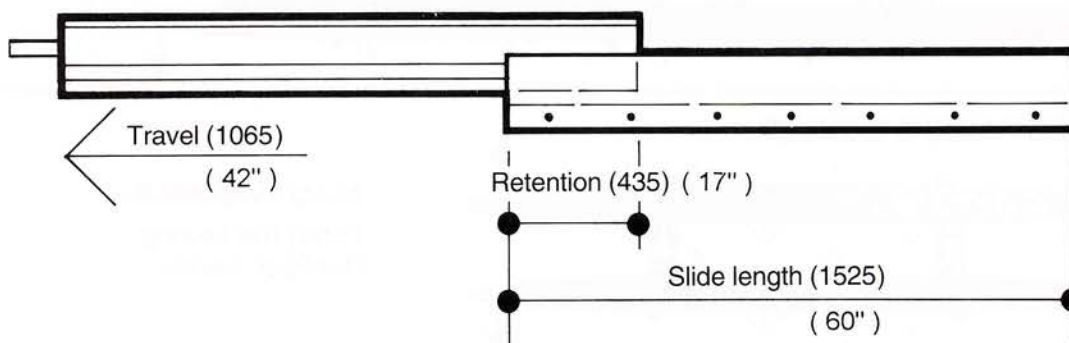


### ELEVATION STANDARD BOAT RACK TRACK

NOT TO SCALE

Note: Slide Tracks must be parallel and level.

Standard measurements as shown, other sizes available.



**Australian  
Design Award  
1988**



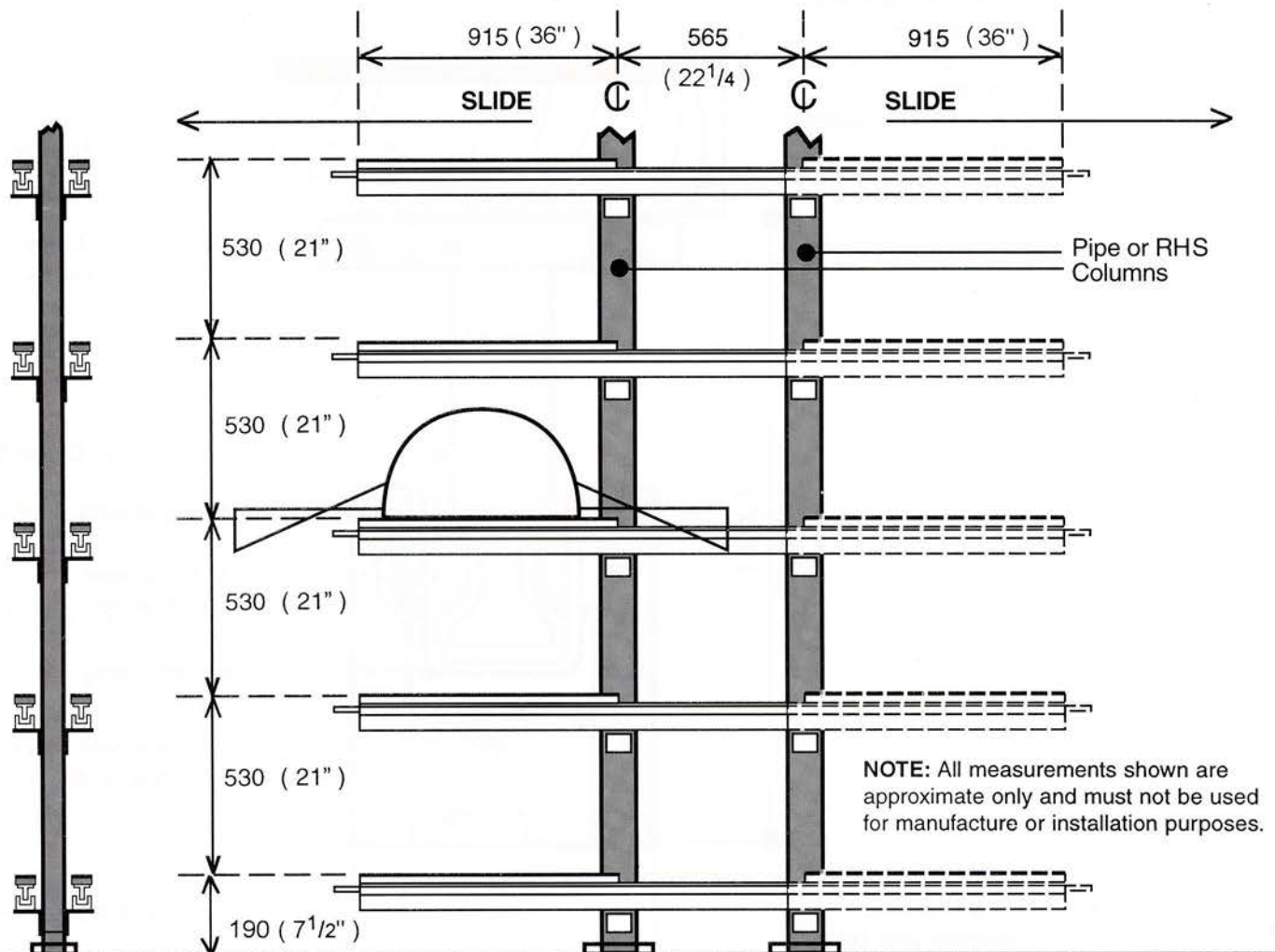
Charles Marshall  
Pty Ltd  
Fitzroy Ball Bearing  
Sliding Door Tracks  
And Withdrawal Units  
Authorised for 1999  
Licence No. 88308  
STANDARDS AUSTRALIA

## BOAT RACK TRACK

### SUGGESTED INSTALLATION METHOD

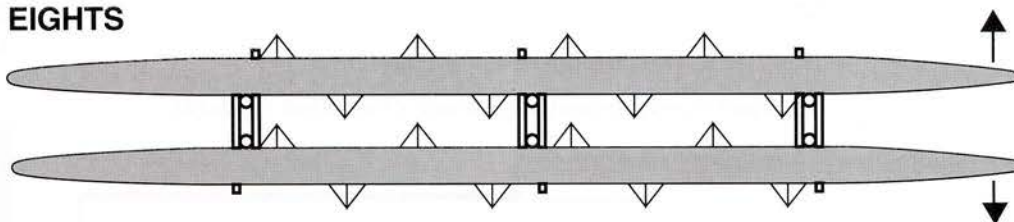
END SECTION

END ELEVATION  
Through double/single rack mounting.

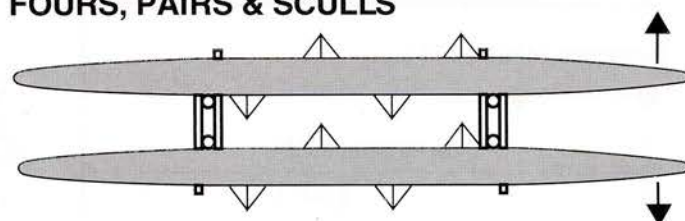


### PLAN VIEWS

#### EIGHTS



#### FOURS, PAIRS & SCULLS



#### ALSO AVAILABLE:

Fitzroy Ball bearing  
Oar Rack Tracks