

**Specified with
Confidence.
Built to Last.**

**Design Freedom
without Compromise**

Heritage meets Performance.

Since 1932, the Fitzroy® Sliding Door System has been specified by architects across Australia. Its unique continuous ball-bearing design ensures even load distribution with minimal wear, delivering smooth operation, strength and long-term reliability for demanding applications.

Originally developed and manufactured by Charles Marshall Pty Ltd, the system quickly became the benchmark for large and complex sliding door installations well suited to environments where reliability, smooth operation and minimal maintenance are essential over the life of the building.

The Fitzroy® Tracks name is also backed by a broader manufacturing heritage dating back to 1880. Over the decades, Fitzroy® Tracks have been installed in some of Australia's most significant buildings including the Shrine of Remembrance (Melbourne), Sydney Opera House, Parliament Houses (Melbourne and Canberra), the Anzac Memorial (Sydney) and Pentridge Prison (Melbourne), demonstrating a long history of durability, precision and trusted performance.



Shrine of Remembrance Melbourne

Today, Fitzroy® Sliding Door Systems deliver:

- Proven sliding door track solutions tailored to each architectural application.
- Engineered performance for large, heavy and complex sliding door applications.
- Integrated metal fabrication to support custom project requirements.

Proudly Australian Made and Owned®, Fitzroy® Tracks combines engineering expertise and craftsmanship to deliver reliable sliding door solutions for architectural applications where performance and longevity matter.

Fitzroy® Ball Bearing Sliding Door Tracks is a recipient of the Australian Design Award®, the independent symbol of outstanding Australian product design endorsed by Standards Australia.



We design for longevity.



Where others can't, we can.

We are typically specified when:

- Loads are too heavy for standard manually operated systems
- Curved tracks are required
- Environments demand durability and performance
- High-risk and mental health environments require ligature resistance.
- Long service life is required
- Doors need to cantilever to accommodate ceiling hoists where standard systems cannot perform.

Lyon House Museum Kew, Lyons Architecture

Available in:

- Aluminium
- Steel

Track systems are tailored to suit the specific requirements of each project in consultation with your design team.

Fitzroy® Sliding Door Track Systems are custom manufactured for each application to suit specific project requirements; not limited by door size and compatible with most environments, door constructions and door hardware.

Aluminium Fitzroy® Sliding Door Tracks



Aluminium Fitzroy® Sliding Door Tracks provide a versatile and efficient solution for architectural applications, with capacity options of 100kg and 500kg.

Their lighter weight design, and flexibility in with fixings and configurations make them suitable for a wide range of projects, including where very long track lengths are required.

Steel Fitzroy® Sliding Door Tracks



Steel Fitzroy® Sliding Door Tracks are engineered for strength and durability in demanding environments, with capacity options of 100kg, 500kg and 1000kg to support a wide range of applications.

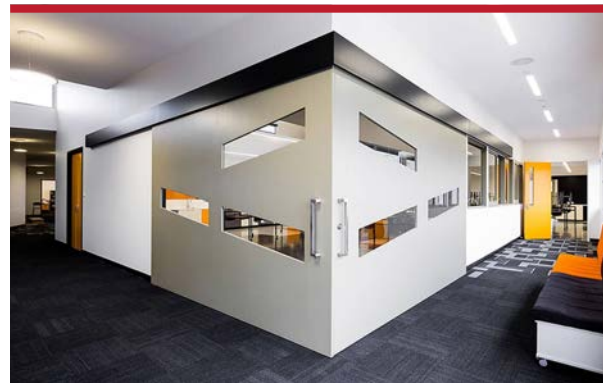
They are commonly specified in applications such as curved architectural projects, radiology and imaging departments, schools, social disability support accommodations, mental health and correctional facilities or where door systems are subject to high-frequency use or rough handling.

Specialist Applications.



Health, Medical and Aged Care

- Patient ensuites and accessible bathroom applications
- Disability accommodation environments
- Radiology and imaging suites with lead-lined doors
- Spaces with patient ceiling hoist systems
- Dental and clinical treatment rooms
- Sliding door applications supporting mental health, behavioural health and ligature-resistant environments



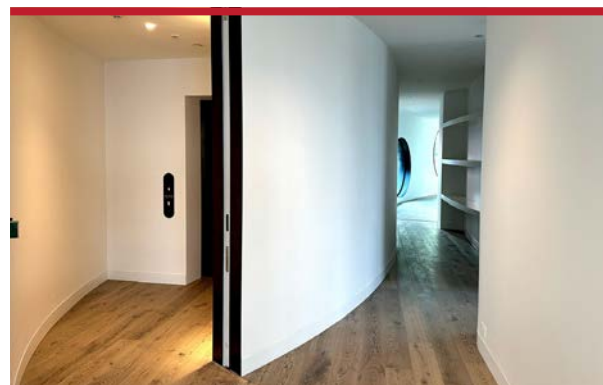
Education

- Multi-door classroom systems
- Flexible learning space configurations
- Operable wall arrangements
- Accessible opening force requirements (subject to door size and weight)
- Demanding school environments



Public Infrastructure

- Secure sliding access
- Large heavy sliding doors
- Venue access gates



Complex Architectural applications

- Curved sliding track systems
- Custom and bespoke architectural solutions
- Heavy sliding door track applications requiring smooth manual operation
- Large spans and complex architectural spaces

Why Architects specify Fitzroy®

- ✓ Over 140 years of trusted design and performance
- ✓ 25-year warranty (standard installation and environment)
- ✓ Proven durability and service life
- ✓ Custom configuration flexibility
- ✓ Ease of manual operation through the continuous ball-bearing track design
- ✓ Minimal maintenance and track wear
- ✓ Engineered to support heavy door loads
- ✓ Market-leading curved tracks
- ✓ Proven across Australia's heritage, and modern architectural projects
- ✓ Custom solutions for smooth, reliable and long-lasting operation

Design Collaboration.

We support specification through:

- Spec sheets
- CAD files
- Samples
- Early design engagement

We engage early in the project lifecycle to solve technical constraints before they become site issues.

Zagame Automotive Rolls Royce & Aston Martin Showroom Richmond

What our clients say.



"Fitzroy® Tracks are a reliable partner for our medical and radiology fitouts. Their heavy duty S500 Steel Fitzroy® sliding door track system consistently performs with our lead-lined doors, which are very heavy, in demanding environments where reliability and precision matter. The team is efficient, detail focused and always professional to deal with. We value their quality products and excellent customer service."

Cassins Healthcare Design & Construct, Castle Hill NSW



"We've used Fitzroy® Tracks on architectural residential and commercial projects involving very large, heavy timber glazed sliding doors. From early design through to installation, their team provided excellent technical support and guidance to ensure the track systems were specified correctly."

The parallel and cupboard-style track arrangements we used work perfectly and our doors run beautifully. We were extremely happy with the results and appreciated the customer service throughout our projects"

Andy Brodie, General Manager, Aspect Windows

Perth Childrens Hospital, Billard Leece Partnership, Cox Architecture, JCY Architects

Specify with confidence.

When performance matters and standard systems won't suffice, Fitzroy® Tracks delivers engineered certainty and long-term reliability.

**Design Freedom
without Compromise**

St Kilda Life Saving Club, Robert Simeone Architects

FITZROY[®]
BALL BEARING SLIDING TRACK SYSTEM

ARCHITECTURAL SLIDING DOOR SYSTEMS

3 Ramage Street, Bayswater VIC 3153
(03) 9429 9044
www.fitzroytracks.com.au
info@fitzroytracks.com.au



**Specified with
Confidence.
Built to Last.**